

# Commercial Heavy 430

## Performance

Tensile Strength	warp	369.5 lbf
Elongation at max. force	warp	88.33%
Tensile Strength	weft	411.7 lbf
Elongation at max. force	weft	127.7%
Wing tear (mean)	warp	63.6 lbf
Wing tear (mean)	weft	54 lbf
Burst pressure		416 lbf

## Fabric Properties

Nominal Fabric Mass	430 gsm ± 20
	12.7 oz/yd <sup>2</sup>

## Roll Specification

Width	3.0 m / 9ft. 10 in. (unfolded)
Length	40 m / 131 ft. 3 in.

## Flammability

ASTM E 84 19B Class A

# Commercial Heavy 430FR

## Performance

Tensile Strength	warp	282.2 lbf
Elongation at max. force	warp	55.66%
Tensile Strength	weft	361.8 lbf
Elongation at max. force	weft	106%
Wing tear (mean)	warp	55.8 lbf
Wing tear (mean)	weft	48.7 lbf
Burst pressure		376 lbf

## Fabric Properties

Nominal Fabric Mass	430 gsm ± 20
	12.7 oz/yd <sup>2</sup>

## Roll Specification

Width	3.0 m / 9ft. 10 in. (unfolded)
Length	40 m / 131 ft. 3 in.

## Flammability

ASTM E 84 19B Class A

CSFM 1237.1\*

NFPA 701\*

\*Contact GALE Pacific for test reports and certificates



\*The results listed in this brochure are typical averages from independent testing and quality assurance testing and are not to be taken as a minimum specification nor as forming any contract between GALE Pacific and another party. Due to continuous product improvement, refer to the GALE Pacific Commercial Fabrics website for latest technical performance information.

\* Please note, due to limitations of the printing process, colors pictured may not represent the true color

\* Please note, Oeko-Tex & Greenguard applicable to non FR products only



## Architectural SHADE FABRIC

Outdoor Recreation Areas  
Car Park Structures  
Sports Complexes

Engineered to withstand extreme weather conditions on large scale tension structures.



Gale Pacific Limited  
145 Woodlands Drive,  
Braeside Victoria 3195  
Toll Free: 1 800 331 521

Gale Pacific USA  
285 West Central Parkway,  
Ste. 1704 Altamonte  
Springs, FL 32714  
Toll Free: 1 800 560 4667

Gale Pacific MENA  
JAFZA 15, 6th Floor, Room 604,  
Jebel Ali Free Zone  
Dubai, United Arab Emirates  
+971 4 881 7114

Gale Pacific EURASIA  
+44 7388 779124

[galecommercial.com](http://galecommercial.com)

# Commercial Heavy 430



# Commercial Heavy 430FR



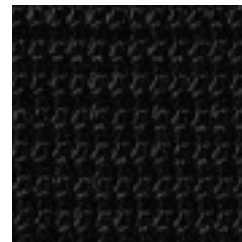
**Architectural Shade Fabric specifically engineered to withstand extreme weather conditions on large scale tension structures**

Made from 100% round monofilament HDPE yarn and with a patented intertwining knit pattern, Commercial Heavy 430 features superior biaxial and load bearing performance for optimum shade and tensioning endurance.

Heavy 430 offers up to 87.9% UVR Block protection and is available in 16 popular colors, making it easier than ever to complement existing design elements and color schemes.



Desert Sand  
484309  
492878



Black  
484422  
492922



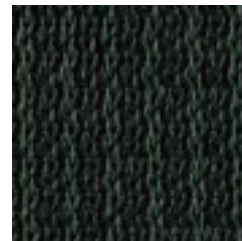
Charcoal  
484460  
492908



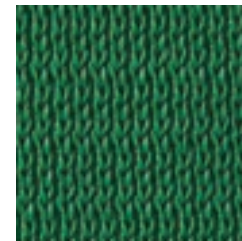
Steel Grey  
484408  
492854



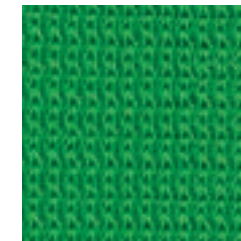
White  
485863  
492847



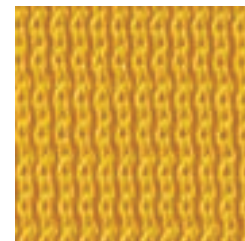
Brunswick Green  
484361  
492915



Emerald  
485887  
492946



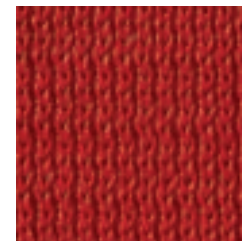
Bright Green  
492779  
492960



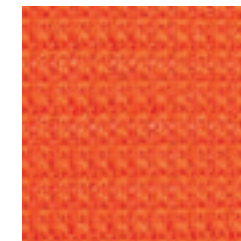
Yellow  
485849  
492830



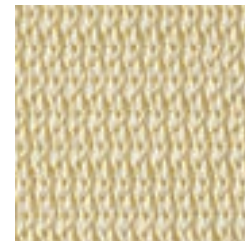
Deep Ochre  
484385  
492885



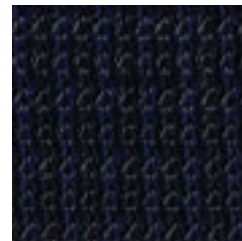
Red  
484484  
492892



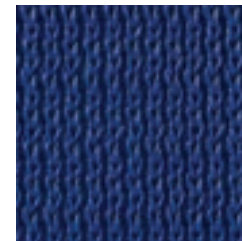
Orange  
492786  
492977



Natural  
484347  
492939



Navy Blue  
484446  
492861



Aquatic Blue  
484323  
492953



Royal Purple  
492793  
492984

**Durability and FR compliance are now combined to create premium fabrics providing maximum performance.**

Only GALE Pacific offers the **WIDEST RANGE of FLAME RETARDANT knitted fabrics globally.**

Our FR fabrics meet the most stringent Fire Standards for shade fabrics including CSFM 1237.1 & NFPA 701 across all color variants with fabrics that offer biaxial stability and tensile properties, for minimal maintenance and improved fabric life.



Patented intertwining knit pattern resulting in superior biaxial performance

100% round monofilament HDPE yarn for optimal structural stability

Uniform balance across the warp and weft for easy fabrication and minimal maintenance

Stentered (heat set) for prevention of shrinking and ease of fabrication